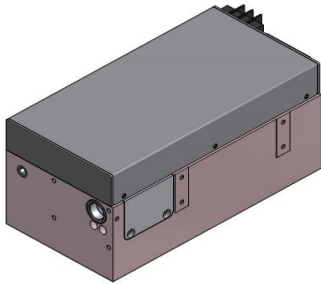


# Onda 355nm 2kHz - Preliminary

Spec. #: ND19401

## High Peak Power Diode Pumped Solid State Laser



### FEATURES

- \_ Up to 150 uJ
- \_ Short pulse duration
- \_ Active Q-Switched up to 2 kHz
- \_ All in one design
- \_ Air Cooled

Technical Specifications	Typical	
Output Wavelength	355	nm
Pulse energy	up to 150	uJ
Pulse Width	< 3	ns
Repetition Rate	Single Shot to 2	kHz
Beam diameter (1/e <sup>2</sup> )	< 2	mm
Polarization	Linear 100:1	
Electrical Requirements	24 V DC IN – 300 W	
Cooling	Air Cooled	
Preliminary Mechanical Dimensions	320 x 105 x 95	mm <sup>3</sup>
Weight	< 5	kg

Options Available:	Applications:
<ul style="list-style-type: none"> <li>- Low jitter option</li> <li>- Water cooling</li> </ul>	<ul style="list-style-type: none"> <li>- Material processing</li> <li>- Special marking</li> <li>- LIDAR</li> </ul>



All information included in this document is subject to change without notice.

Update data sheets can be provided after formal request.

For complete details, please contact your local **Bright Solutions** sales representative or visit our website at [www.brightsolutions.it](http://www.brightsolutions.it)

**Bright Solutions Srl**

Via Artigiani, 27  
27010 Cura Carpignano - PV  
Italy

Ph. +39 0382583094

e-mail: [sales@brightsolutions.it](mailto:sales@brightsolutions.it)