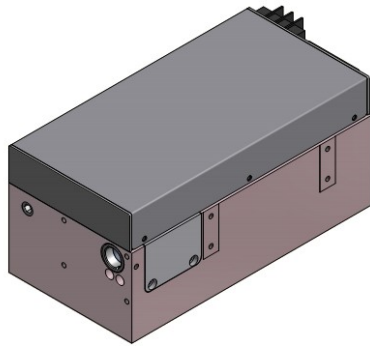


Onda 10W 532nm

Spec. #: ND19202

High Peak Power Diode Pumped Solid State Laser



FEATURES

- _ Up to 750 uJ
- _ Short pulse duration
- _ up to 100 kHz
- _ All solid state design
- _ Air Cooled
- _ Low heat waste

Technical Specifications	Typical	
Output Wavelength	532	nm
Pulse energy	Up to 750	uJ
Pulse Width	2 to 14	ns
Repetition Rate	Single shot to 100	kHz
Polarization	Linear 100:1	
Beam diameter (1/e ²)	< 2.5 (collimated)	mm
Beam Quality (M ²)	< 1.3 @ 10 kHz	
Electrical Requirements	24 V DC IN (*)	
Cooling	Air Cooled	
Preliminary Mechanical Dimensions	235 x 105 x 95	mm ³
Weight	< 4.5	kg

(*) Optional: 100-230 AC DC Power Supply

Options Available:	Applications:
<ul style="list-style-type: none"> - Beam Expanding and Collimating optics - Red aiming beam - Low jitter - Circular polarization - Water and contact cooling 	<ul style="list-style-type: none"> - Machining of glass - LIDAR - Material Processing - High Speed Specialty Marking



All information included in this document is subject to change without notice.

Update data sheets can be provided after formal request.

For complete details, please contact your local **Bright Solutions** sales representative or visit our website at www.brightsolutions.it

Bright Solutions Srl

Via Artigiani, 27
27010 Cura Carpignano - PV
Italy

Ph. +39 0382583094

e-mail: sales@brightsolutions.it