

Oxxiús

Simply Light

Single Longitudinal Mode Lasers



2024

Raman Spectroscopy
Brillouin Scattering
Interferometry
Photoluminescence
Holography
Laser Doppler Velocimetry
Laser Ultrasonic
Dynamic Light Scattering

LaserBoxx

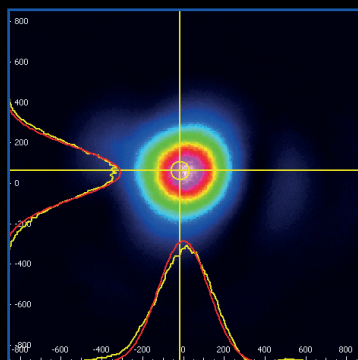
One platform for all colors

Monolithic DPSS lasers

- Up to 500 mW continuous wave
- Wavelength stability ≤ 1 pm
- Lowest power consumption on the market
 - ≤ 12 W for LCX, any wavelength, less than 200 mW
 - ≤ 20 W for LPX-532S, 500 mW
 - ≤ 15 W for LPX-561S, 300 mW
- Low profile laser head (32 mm)
- Tailored beam diameter option (0.6 to 1.4 mm)

Benefits of VGB stabilized Lasers

- Proprietary SLM locking routine
- Enhanced beam quality versions



Beam Profile LBX-633

Common key features

- Single longitudinal mode
- TEM₀₀ Beam
- Integrated control electronics
- SM/PM/MM fiber coupling options
- USB and RS232 interfaces
- Dedicated control software
- LBX and LCX - Industry standard footprint (100 x 40 mm²)
- LPX and LSX - 120 x 40 mm² footprint

Technology

DPSS lasers

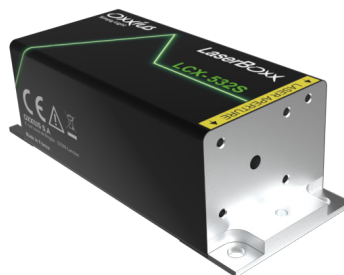
The LCX and LPX LaserBoxx are diode-pumped solid-state (DPSS) laser sources. The unique feature of these models is a proprietary, Alignment-free Monolithic Resonator (AMR).



The elements of resonator are assembled into a single ultra-low-loss optical subsystem, using a proprietary crystal bonding technique.

Benefits of the AMR

This technology yields to highly efficient pump schemes and allows for the highest spectral quality on the market, as well as an important robustness over time. The LCX and LPX models are insensitive to temperature variations and to mechanical vibrations.



Diode lasers

The LBX and LSX models are based on integrating a temperature-stabilized laser diode.

Benefits

These models deliver an ultra-narrow linewidth emission due to their stable design and low noise current.

DPSS lasers

	Emission wavelength (And tolerance)	Nominal optical power continuous wave	Wavelength stability over 8h and $\pm 3K$	Linewidth	Side mode suppression ratio	Polarization state	Beam waist diameter**	Beam quality factor (M^2)	Beam circularity in far field	Coupling efficiency into a single mode fiber
LCX-532S	532.3 nm (± 0.5 nm)	50 / 100 / 150 200 / 300 mW	≤ 1 pm	≤ 1 MHz	≥ 30 db	linear, vertical 1000 :1 extinction ratio	0.7 mm (± 0.1 mm)	≤ 1.1	$\geq 90\%$	$\geq 70\%$
LPX-532S		500 mW								
LCX-553S	553.0 nm (± 0.4 nm)	50 / 100 / 200 mW								
LCX-561S	561.4 nm (± 0.4 nm)	50 / 100 150 / 200 mW								
LPX-561S		300 mW								
LCX-946S	946.0 nm (± 0.3 nm)	50 mW								
LCX-1064S	1064.6 nm*** (± 0.6 nm)	100 / 200 / 300 500 mW								

*at $1/e^2$, 50 mm at output aperture

*** The LCX-1064S emits a class 1 visible aiming beam

Diode lasers

	Emission wavelength (And tolerance)	Nominal optical power continuous wave	Wavelength stability over 8h and $\pm 3K$	Linewidth	Side mode suppression ratio	Linear polarization extinction ratio	Beam waist diameter* (typ.)	Beam quality factor (M^2)	Beam circularity in far field	Coupling efficiency into a single mode fiber
LBX-633S	633 nm (± 0.5 nm)	40 mW	≤ 10 pm	≤ 100 MHz	≥ 35 db	50:1	0.2 to 0.6 mm	≤ 1.9	$\geq 65\%$	$\geq 50\%$
LSX-785S-ISO	785 nm (± 0.5 nm)	150 mW with isolator			≥ 25 db	100:1	0.4 to 0.6 mm	≤ 1.25	$\geq 90\%$	
LBX-830S	830 nm (± 0.5 nm)	150 mW			≥ 35 db	50:1	0.5 to 1.0 mm	≤ 1.9	$\geq 65\%$	
LBX-785S-MM	785 nm (± 0.5 nm)	450 / 600 mW	≤ 10 pm	100 pm 60 pm typ.	≥ 35 db	Delivery on multimode fiber 100 μ m-core diameter 0.22 numerical aperture				
LBX-830S-MM	830 nm (± 0.5 nm)									
LBX-976S-MM	976 nm (± 0.5 nm)									
LBX-1064S-MM	1064 nm (± 0.5 nm)									

*at $1/e^2$, 50 mm at output aperture

Common specifications

- Power stability (over 8h and $\pm 3K$) $\pm 1\%$
- Power adjustment optional with L1C-MPA/AOM
- Optical noise (10Hz - 20MHz bandwidth) $\leq 0.2\%$, 2rms

L1C

The L1C platform offers an efficient, compact and cost effective solution to add advanced features to the LaserBoxx lasers :

Motorized Power Attenuator (MPA)

- Stable spectral properties and beam quality
- Analog input control through analog input voltage and/or USB

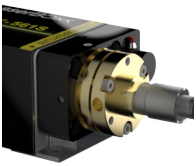
**Acousto-Optic Modulator (AOM)**

- Linearized output ; full extinction with e-m shutter
- 3 MHz modulation bandwidth (-3 dB)
- Transmission ratio over 85%
- Analog and digital modulations

Isolator (ISO)

- Can be installed along with MPA
- Low insertion loss

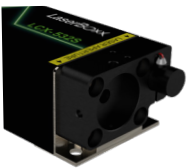
Fiber coupling



A rugged and compact accessory that injects the laser beam into a single mode (SM) fiber, a polarization maintaining (PM) fiber, or a multimode (MM) fiber.

	SM and PM Fiber	MM Fiber (50 μ m, 0.22 NA)
Coupling Efficiency	LCX LPX LSX \geq 70 % LBX-S \geq 50 %	\geq 80 %
Power Stability over 8 hours, \pm 1.5 K	\pm 2 %	\pm 2 %
Polarization extinction ratio (PMF only)	\geq 50:1	n/a
Available optical connectors	FC-APC FC-PC, FCP8	AR-coated SMA FC-APC
Fiber length	2.0 m	2.0 m

Electro-mechanical shutter



The ACX-SHTE is a compact and affordable electro-mechanical shutter. It is mounted directly on the LCX or LPX in place of the standard manual shutter.

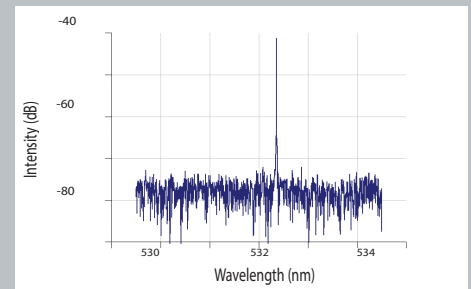
Customization

- Wavelength tunability over 5 to 10 pm
- Wavelength selection
- Opto-mechanical Subassemblies including :
 - Wavelengths combiner (L4Cc, L6Cc)
 - AO modulator (see L1C datasheet)
 - Specific beam diameter or beam shaping

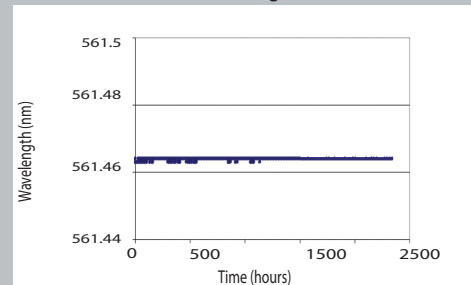


Performances

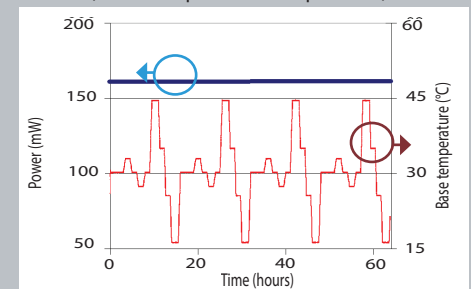
Single longitudinal mode (LCX-532S-spectrum)



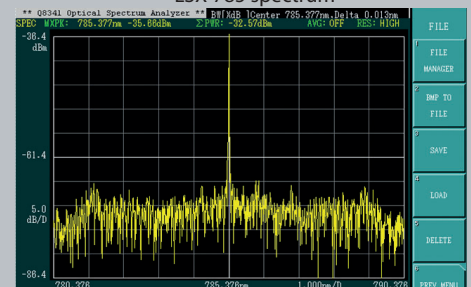
Wavelength stability (LCX-561S-wavelength vs time)



Power stability (LCX-561S-power vs temperature)



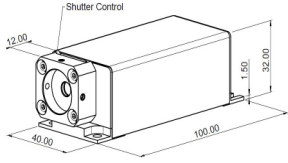
Single Longitudinal Mode LSX-785 spectrum



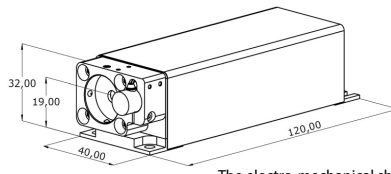
System Specifications

Plug & Play, CDRH-compliant versions

LCX series DPSS laser

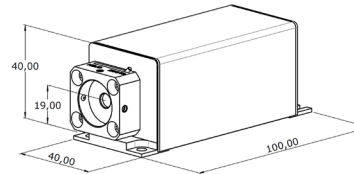


LPX series DPSS laser



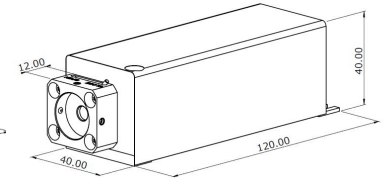
The electro-mechanical shutter is standard on LPX models

LBX series Stabilized laser diode



Optional heatsink available

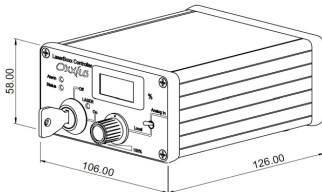
LSX series Stabilized laser diode



Optional heatsink available

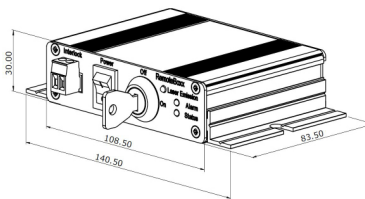
Power-adjustable versions (PPA)

PPA - ControlBoxx



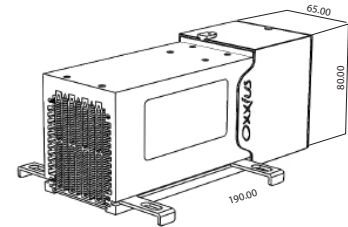
Fixed power versions (PPF)

PPF - RemoteBoxx



For improved stability

Heat sink



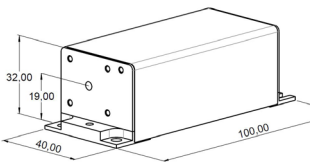
Compliance	CE and FDA 21 CFR 1040.10 / 1040.11
Operating temperature	10 to 38 °C (ambient air)
Power consumption	≤ 25 W
Storage temperature	0 to 60 °C

Supply voltage	100 to 240 VAC external power supply
Warm-up time	LCX, LPX: ≤ 10 minutes LBX, LSX: ≤ 2 minutes
Communication interfaces	USB, RS-232, dedicated interface

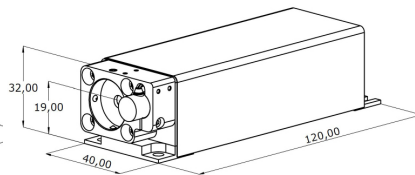
OEM - dedicated versions

Control electronics is integrated into the laser head

LCX series DPSS Laser

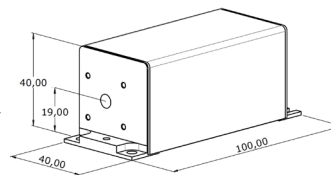


LPX series DPSS Laser

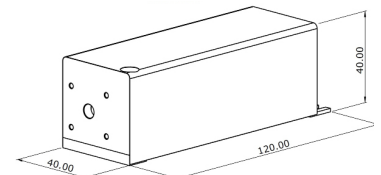


The electro-mechanical shutter is standard on LPX

LBX series Stabilized laser diode



LSX series Stabilized laser diode Integrated isolator



	LCX and LPX	LBX and LSX
Compliance	FDA 21 CFR 1040.10 / 1040.11	
Operating temperature baseplate	10 to 50 °C	20 to 35 °C
Power consumption	≤ 25 W	≤ 10 W
Storage temperature	0 to 60 °C	
Supply voltage	5 to 12 VDC	
Warm-up time	≤ 10 minutes	≤ 2 minutes
Communication interfaces	USB, RS-232, dedicated electronical interface	



Contact us

OXXIUS SA

4 rue Louis de Broglie
22300, Lannion, France

sales@oxxius.com

or by phone

+33 296 48 70 28

Distributors

AUSTRALIA

Lastek Pty Ltd
Thebarton campus, University of Adelaide
10 Reid Street Thebarton SA 5031
Phone: (+61) 8 8443 8668
Fax: (+61) 8 8443 8427
E-mail: jessica@lastek.com.au
Web: www.lastek.com.au>Lastek Pty Ltd

INDIA

Dynotech Instruments pvc ltd
803-804, Vishwasadan, Distt Center
Janakpuri, New Delhi-110058
E-mail: sales@dynotechmail.in
Web: www.dynotech.in

KOREA

L2K Co., Ltd.
A-305, 289-1 Daehwa-dong
Daedeok-gu Daejeon 306-754
Phone: (+82) 42 670 7744
Fax: (+82) 42 670 7741
E-mail: sales@l2k.kr
Web: www.l2k.kr

SPAIN & PORTUGAL

IberOptics Sistemas Ópticos, S.L
C/ Camino de Hormigueras, 124-4, 3º
E-28031 Madrid
Phone: (+34) 91 3854 395
Fax: (+34)
E-mail: info@iberoptics.com
Web: www.iberoptics.com

USA

RPMC Lasers, Inc.
203 Joseph Street
O'Fallon, MO-63366
Phone: (636) 272 7227
Fax: (636) 272 3909
E-mail: rpmc@rpmclasers.com
Web: www.rpmclasers.com

BENELUX

Oxxius S.A.
4, rue Louis de Broglie
22300 Lannion
Phone: (+33) 2 96 48 70 28
Mobile: (+33) 6 43 86 18 01
E-mail: dassous@oxxius.com

ISRAEL

Rosh Electroptics
P.O.B 2667 Netanya 4212601
Phone: (+972) (0)9-8627401
Fax: (+972) (0)9-8616185
E-mail: info@roshelop.co.il
Web: www.roshelop.co.il

POLAND

Scitec Instruments Polska
Malinowskiego 1/12
PL 02-776 Warszawa
Phone: (+48) 22 406 8127
Fax: (+48) 22 406 8127
E-mail: sales@scitecinstruments.pl
Web: www.scitecinstruments.pl

SINGAPORE

Acexon Technologies Pte Ltd
21 Bukit Batok Crescent
#20-83 WCEGA Tower, Singapore
Phone: 65-65657300
Fax: 65-65657005
E-mail: sales@acexon.com
Web: www.acexontech.com

VIETNAM

Atek Vietnam Co., Ltd
6th Floor, Viet Asia Building,
9 Duy Tan Street,
Dich Vong Hau Ward,
Cau Giay District, Hanoi City
Phone: (+84) - 4 - 2120.3666
Fax: (+84) - 4 - 3224.2402
E-mail: thanh.nt@atekvietnam.com
Web: www.atekvietnam.com

CHINA

Aunion Tech Co., Ltd
Room 905, F building, Everbright
convention and exhibition centre,
No. 86 CaoBao road, ShangHai 200235
Phone: (+86) 21 5108 3793
Fax: (+86) 21 3424 1962
E-mail: info@auniontech.com
Web: www.auniontech.com

ITALY

OPTOPRIM s.r.l
-Via Rota, 37,20900 Monza (MB)
Phone: (+39) 039 834977
- Via Monte Giberto, 15, 00138 Roma
Phone: (+39) 06 87657838
E-mail: info@optoprim.it
Web: www.optoprim.it

SCANDINAVIA

Laser 2000 GmbH
Strandbergsgatan 61
S-112 51 Stockholm, Sweden
Phone: (+33) 632 85 89 24
E-mail: froume@oxxius.com

TAIWAN

Bio Accord
No. 142-2 Jiu-Kwang Rd
Panchiao, Taipei county (220)
Phone: (+886) 2 2250 5019
Fax: (+886) 2 2362 3176
E-mail: biotical@ms37.hinet.net
Web: www.bioaccord.com.tw

GERMANY

Laser 2000 GmbH
Argelsrieder Feld 14
D-82234 Wessling
Phone: (+49) (0) 8153 4050
Fax: (+49) (0) 8153 40533
E-mail: contact@laser2000.de
Web: www.laser2000.de

JAPAN

Autex
Shinjuku Takasago Bldg,
4F, 16-5 Tomihisa-Cho,
Shinjuku-Ku, Tokyo 162-0067
Phone: (+81) 3 322 66321
Fax: (+81) 3 322 66290
E-mail: sales32@autex-inc.co.jp
Web: www.autex-inc.co.jp

SWITZERLAND

Oxxius S.A.
4, rue Louis de Broglie
22300 Lannion
Phone: (+33) 2 96 48 70 28
Mobile: (+33) 6 43 861 801
E-mail: dassous@oxxius.com

UNITED KINGDOM

Photonic Solutions Ltd
Unit 2.2 Quantum Court
Heriot-Watt University Research Park
Edinburgh, EH14 4AP
Phone: (+44) (0)131 664 8122
Fax: (+44) (0)131 449 7301
E-mail: sales@photonicssolutions.co.uk
Web: www.photonicssolutions.co.uk

