

SB1-473-1-10

Spec. #: SB1-21306

Microchip Laser



MAIN FEATURES

- 473 nm
- < 2 ns
- > 1 uJ
- Single Longitudinal Mode
- All-In-One Miniature Design

Technical Specifications

| Technical Specifications | | |
|---|----------------|------|
| Output Wavelength | 473 | nm |
| Pulse Repetition Rate | 10 | kHz |
| Pulse energy | > 1 | uJ |
| Pulse Width | < 2 | ns |
| Peak Power | > 0.5 | kW |
| Short Term Output Energy Instability (St.Dev. Over > 10000 samples) | < 3 % | |
| Long Term Output Power Instability (Power log over 24 hours) | < 5 % | |
| Beam Quality (M ²) | < 1.5 | |
| Output Beam Dimensions (H x V) at Exit Aperture (1/e ²) without beam expander | < 0.25 x 0.2 | mm |
| Beam Divergence (H x V, half angle) without beam expander | < 0.7 x 4 | mrad |
| Beam Ellipticity (axes ratio) | > 0.80 | |
| Warm Up time after cold start | < 5 | min |
| Power Consumption | < 20 | W |
| Mechanical Package | SB1 | |
| Operational Temperature Range | +10°C to +40°C | |
| Storage Temperature Range | -20°C to +60°C | |

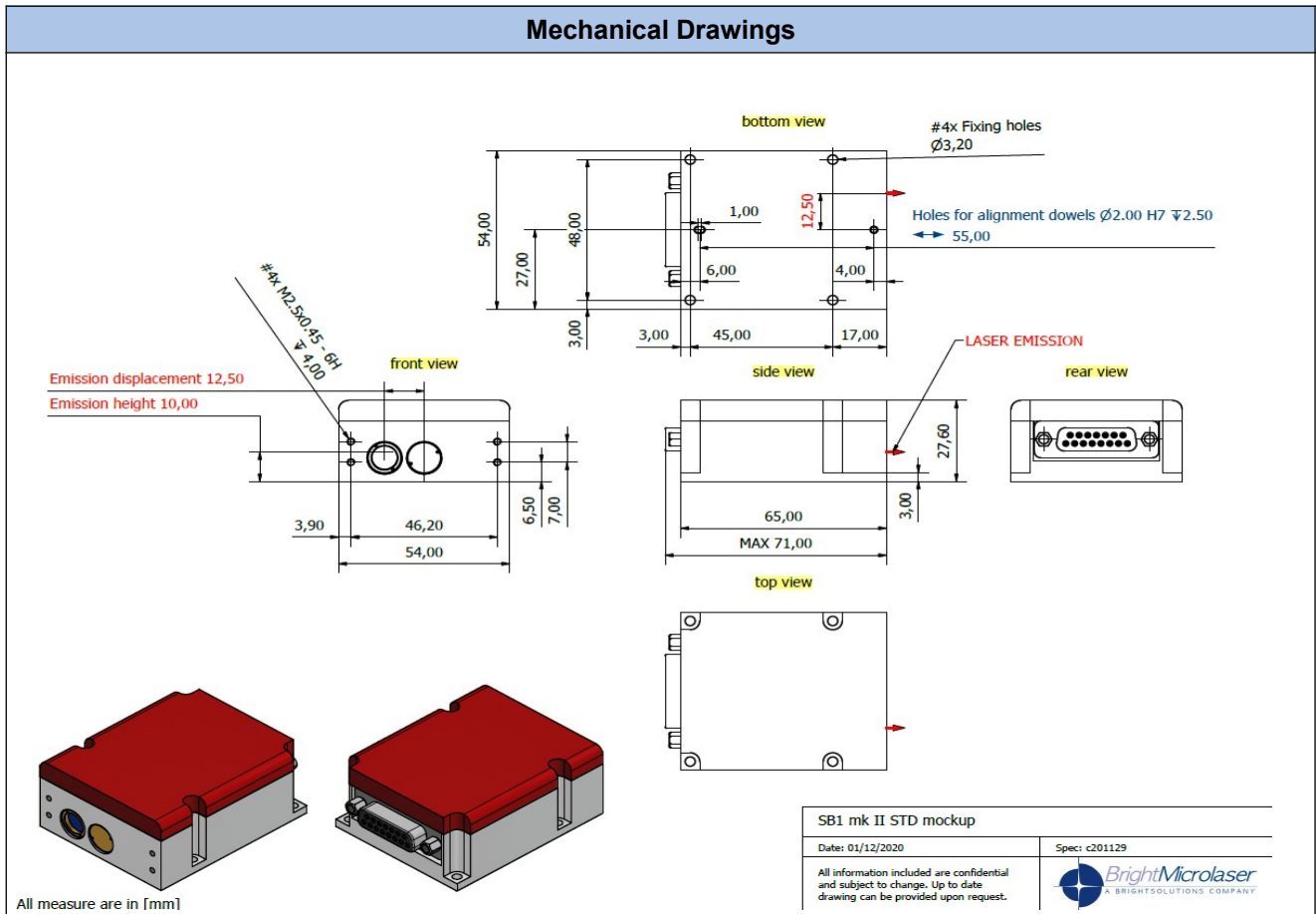
All information included in this document are subject to change without notice.

Updated data sheets can be provided on request.

For further details, please contact your local **Bright Microlaser** sales representative or visit our website at www.brightmicrolaser.com

Bright Microlaser Srl
Via Artigiani, 21
27010 Cura Carpignano - PV
Italy
Phone: +39 0382 583094
e-mail: info@brightmicrolaser.com

Mechanical Drawings



Options Available:

- Beam Expander and Collimator
- Heat-sink
- Development kit
- Quick start/evaluation kit

All information included in this document are subject to change without notice.

Updated data sheets can be provided on request.

For further details, please contact your local **Bright Microlaser** sales representative or visit our website at www.brightmicrolaser.com

Bright Microlaser Srl
Via Artigiani, 21
27010 Cura Carpignano - PV
Italy
Phone: +39 0382 583094
e-mail: info@brightmicrolaser.com