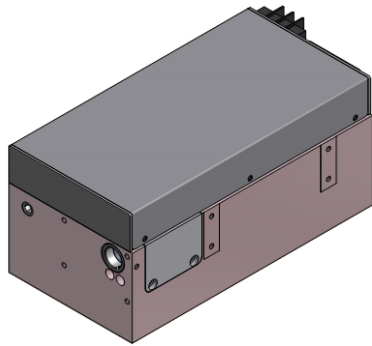


# Onda 10W 532nm

Spec. #: ND19202

## High Peak Power Diode Pumped Solid State Laser



### FEATURES

- \_ Up to 800 uJ
- \_ Short pulse duration
- \_ up to 100 kHz
- \_ All solid state design
- \_ Air Cooled
- \_ Low heat waste

Technical Specifications	Typical	
Output Wavelength	532	nm
Pulse energy	Up to 800	uJ
Pulse Width	2 to 14	ns
Repetition Rate	Single shot to 100	kHz
Polarization	Linear 100:1	
Beam diameter (1/e <sup>2</sup> )	< 2.5 (collimated)	mm
Beam Quality (M <sup>2</sup> )	< 1.3 @ 10 kHz	
Electrical Requirements	24 V DC IN (*)	
Cooling	Air Cooled	
Preliminary Mechanical Dimensions	235 x 105 x 95	mm <sup>3</sup>
Weight	< 4.5	kg

(\*) Optional: 100-230 AC DC Power Supply

Options Available:	Applications:
<ul style="list-style-type: none"> <li>- Beam Expanding and Collimating optics</li> <li>- Red aiming beam</li> <li>- Low jitter</li> <li>- Circular polarization</li> <li>- Water and contact cooling</li> </ul>	<ul style="list-style-type: none"> <li>- Machining of glass</li> <li>- LIDAR</li> <li>- Material Processing</li> <li>- High Speed Specialty Marking</li> </ul>



All information included in this document is subject to change without notice.

Update data sheets can be provided after formal request.

For complete details, please contact your local **Bright Solutions** sales representative or visit our website at [www.brightsolutions.it](http://www.brightsolutions.it)

**Bright Solutions Srl**  
Via Artigiani, 27  
27010 Cura Carpignano - PV  
Italy  
**Ph.** +39 0382583094  
**e-mail:** [sales@brightsolutions.it](mailto:sales@brightsolutions.it)