
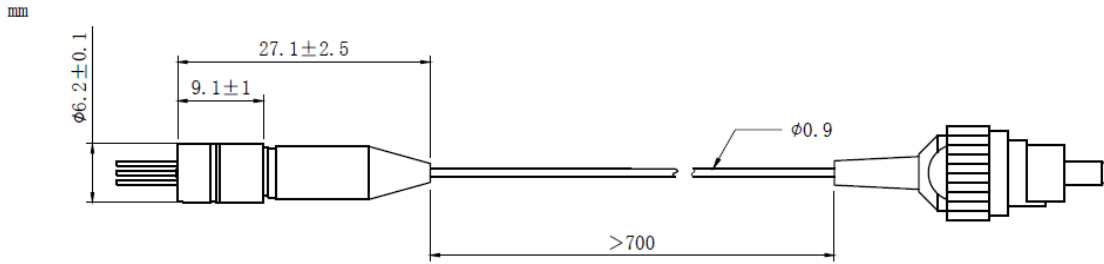


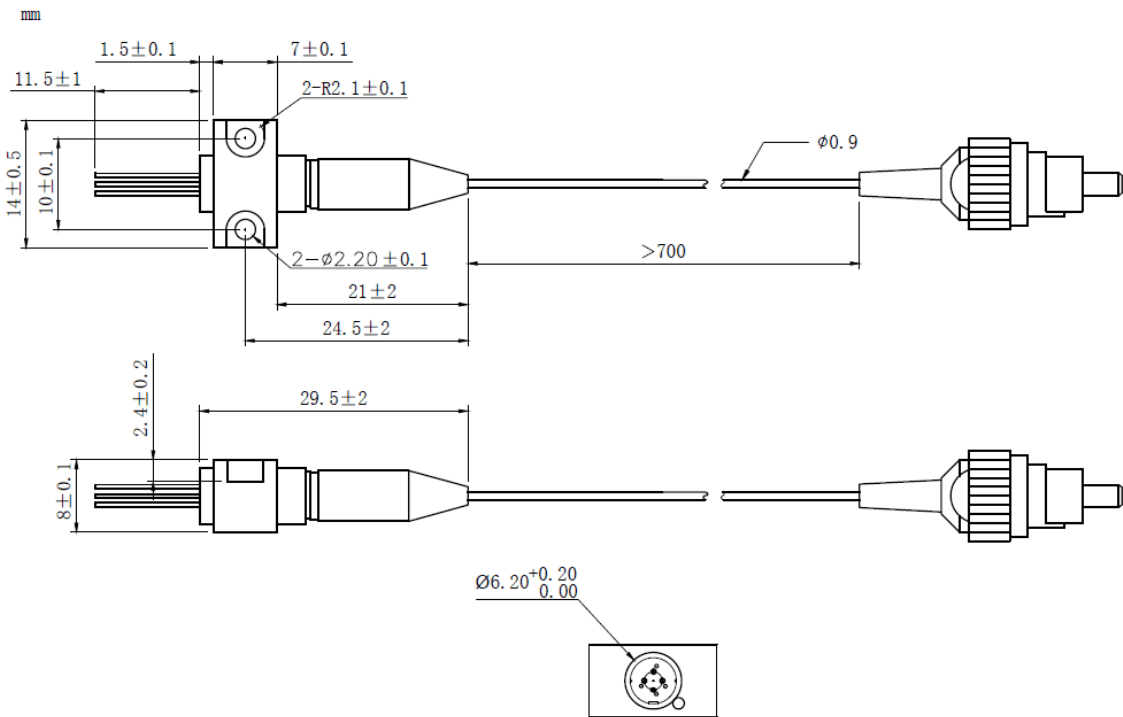
1330nm 10mW Pigtailed Laser Module with Polarization maintaining Fiber (PM Fiber)
1330nm PM Fiber Coupled LD Module with Coaxial Package (9um Single Mode PM Fiber)
RWLP-1330-010m-PM-DFB-ISO

PARAMETER	SYMBOL	VALUE	UNIT
LD Reverse Voltage	V_r	2.0	V
PD Reverse Voltage	$V_{r(PD)}$	15	V
Operating Temperature	T_{op}	-20 ~ +50	°C
Storage Temperature	T_{stg}	-40 ~ +100	°C
Lead soldering temperature (10 sec.)	T_{is}	260	°C
Features: <ul style="list-style-type: none"> • 1330nm • DFB Laser Diode • Built-in Photodiodes • Built-in Isolator • High Reliability • High Polarization Extinction Ratio 			
Applications: <ul style="list-style-type: none"> • Test Equipments • Optical Transmitter of Analog Signal • Optical Transmitter of Data Signal 			
Specifications		RWLP-1330-010m-PM-DFB-ISO	
		Min	Type
Center Wavelength@25°C		$\pm 3\text{nm}$	1330nm
Spectral Width(FWHM)		----	0.3nm
Output Power		----	10mW
Fiber Type	Polarization Maintaining Fiber		
Fiber Core	9um		
Recommended Operation Temperature	25°C		
Polarization Extinction Ratio	13dB	15dB	----
Connector	FC/APC		
Threshold Current (Typ.) I_{th}	----	5mA	15mA
Operating Current	----	90mA	100mA
Operating Voltage	----	1.4V	1.7V
Optical Isolation		30dB	
Fiber Length	>80cm		
Package Style	Coaxial or B86		
High Polarization Extinction Ratio (PER) Version Laser Module is also available, please contact us.			

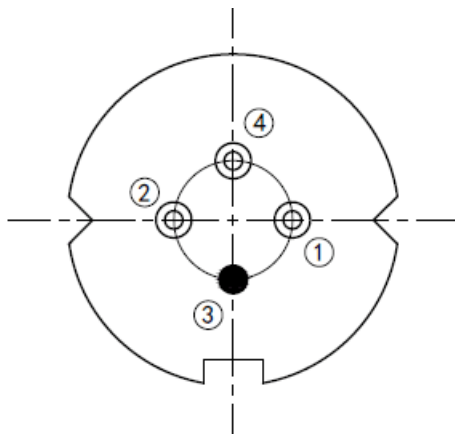
Coaxial Package View: (Part Number: RWLP-1330-010m-PM-DFB-ISO)



B86 Package View: (Part Number: RWLP-1330-010m-PM-B-DFB-ISO)



Bottom View: (A-Type)



PIN 1	PD (+)
PIN 2	LD (-)
PIN 3	LD (+), CASE
PIN 4	PD (-)

Electrically shorten LD module and store in non-extreme conditions.

Suggest using the constant current power supply.

