


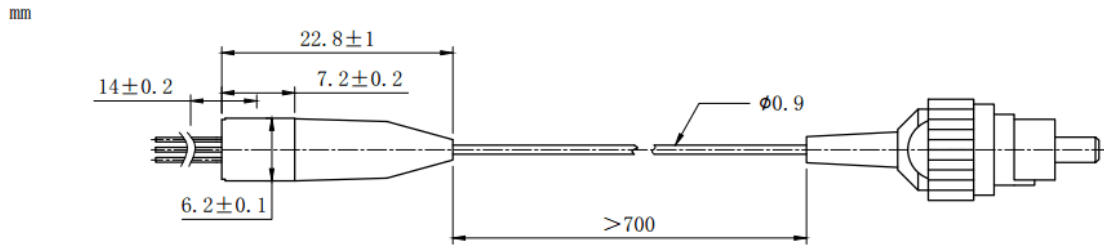
**1370nm 5mW DFB Coaxial Pigtailed Laser Diode with 9um SMF | Built-in Isolator**

**1370nm SM Fiber Coupled LD with Single Mode Fiber (SM Fiber) | Built-in PD**

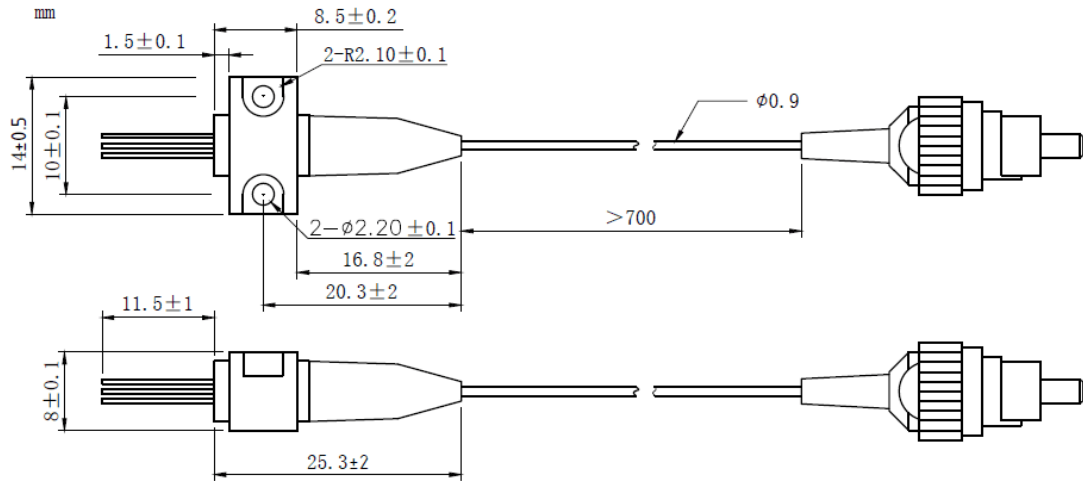
**RWLP-1370-005m-9-DFB-ISO**

PARAMETER	SYMBOL	VALUE	UNIT
LD Reverse Voltage	$V_r$	2.0	V
PD Reverse Voltage	$V_{r(PD)}$	15	V
Operating Temperature	$T_{op}$	-20 ~ +50	°C
Storage Temperature	$T_{stg}$	-40 ~ +100	°C
Lead soldering temperature (10 sec.)	$T_{is}$	260	°C
<b>Features:</b> <ul style="list-style-type: none"> <li>• 1370nm</li> <li>• DFB Laser Diode</li> <li>• Built-in Photodiodes</li> <li>• 9um SM Fiber</li> <li>• Built-in Isolator</li> <li>• Coaxial or B85 Package</li> </ul>			
<b>Applications:</b> <ul style="list-style-type: none"> <li>• Test Equipments</li> <li>• Optical Transmitter of Analog Signal</li> <li>• Optical Transmitter of Data Signal</li> </ul>			
<b>Specifications</b>		<b>RWLP-1370-005m-9-DFB-ISO</b>	
		<b>Min</b>	<b>Type</b>
Center Wavelength@25°C		±3nm	1370nm
<b>Laser Type</b>		<b>DFB</b>	
Output Power		----	5mW
<b>Fiber Core</b>		<b>9um SM Fiber</b>	
Threshold Current (Typ.) $I_{th}$		----	5mA
Operating Current		----	60mA
Operating Voltage		----	1.4V
Spectral Width (FWHM)		----	0.3nm
SMSR		----	35dB
Monitor Current		<b>0.1mA</b>	----
PD Capacitance		----	10pF
PD Dark Current		----	<b>0.1uA</b>
Optical Isolation		----	30dB
<b>Package Style</b>		<b>Coaxial or B85</b>	
Recommended Operation Temperature		25°C	
<b>Connector</b>		<b>FC/SC/SMA905</b>	

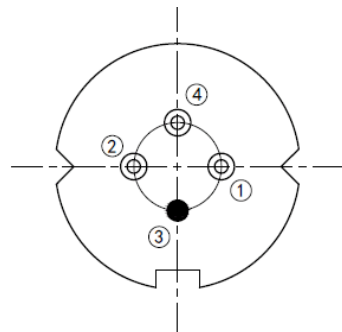
**Coaxial Package View: (Part Number: RWLP-1370-005m-9-DFB-ISO)**



**B85 Package View: (Part Number: RWLP-1370-005m-9-B-DFB-ISO)**



**Bottom View: (A-Type)**



PIN 1	PD (+)
PIN 2	LD (-)
PIN 3	LD (+), CASE
PIN 4	PD (-)

Electrically shorten LD module and store in non-extreme conditions.

Suggest using the constant current power supply.

