


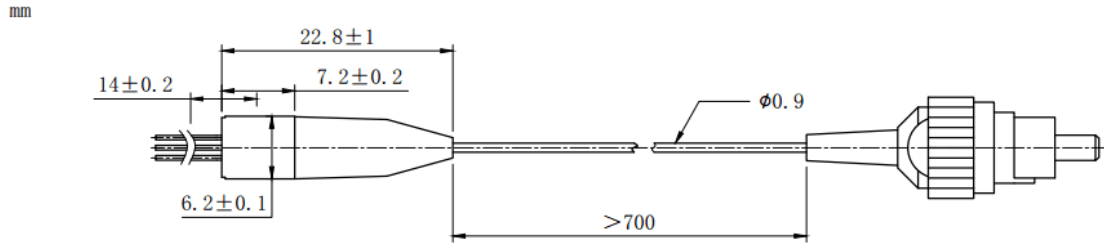
1390nm 10mW DFB Coaxial Pigtailed Laser Diode with 9um SMF | Built-in Isolator

1390nm SM Fiber Coupled LD with Single Mode Fiber (SM Fiber) | Built-in PD

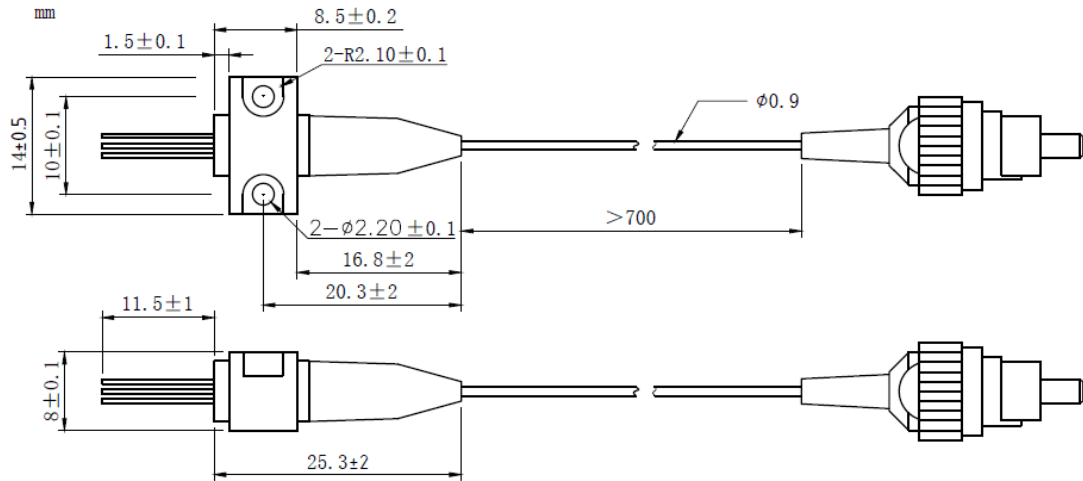
RWLP-1390-010m-9-DFB-ISO

PARAMETER	SYMBOL	VALUE	UNIT	
LD Reverse Voltage	V_r	2.0	V	
PD Reverse Voltage	$V_{r(PD)}$	15	V	
Operating Temperature	T_{op}	-20 ~ +50	°C	
Storage Temperature	T_{stg}	-40 ~ +100	°C	
Lead soldering temperature (10 sec.)	T_{is}	260	°C	
Features: <ul style="list-style-type: none"> • 1390nm • DFB Laser Diode • Built-in Photodiodes • 9um SM Fiber • Built-in Isolator • Coaxial or B85 Package 				
Applications: <ul style="list-style-type: none"> • Test Equipments • Optical Transmitter of Analog Signal • Optical Transmitter of Data Signal 				
Specifications		RWLP-1390-010m-9-DFB-ISO		
		Min	Type	Max
Center Wavelength@25°C		±3nm	1390nm	±10nm
Laser Type		DFB		
Output Power		----	10mW	----
Fiber Core		9um SM Fiber		
Threshold Current (Typ.) I_{th}		----	5mA	15mA
Operating Current		----	90mA	100mA
Operating Voltage		----	1.4V	1.7V
Spectral Width (FWHM)		----	0.3nm	1nm
SMSR		----	35dB	----
Monitor Current		0.1mA	----	----
PD Capacitance		----	10pF	20pF
PD Dark Current		----	----	0.1uA
Optical Isolation		----	30dB	----
Package Style		Coaxial or B85		
Recommended Operation Temperature		25°C		
Connector		FC/SC/SMA905		

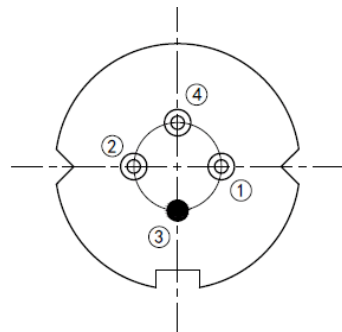
Coaxial Package View: (Part Number: RWLP-1390-010m-9-DFB-ISO)



B85 Package View: (Part Number: RWLP-1390-010m-9-B-DFB-ISO)



Bottom View: (A-Type)



PIN 1	PD(+)
PIN 2	LD(-)
PIN 3	LD(+), CASE
PIN 4	PD(-)

Electrically shorten LD module and store in non-extreme conditions.

Suggest using the constant current power supply.

