


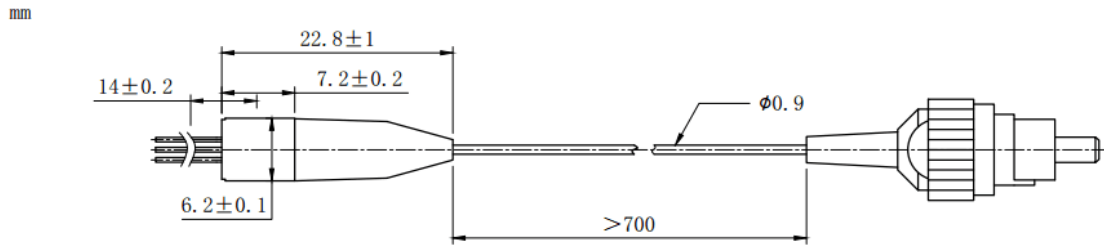
**1450nm 5mW DFB Coaxial Pigtailed Laser Diode with 9um SMF | Built-in Isolator**

**1450nm SM Fiber Coupled LD with Single Mode Fiber (SM Fiber) | Built-in PD**

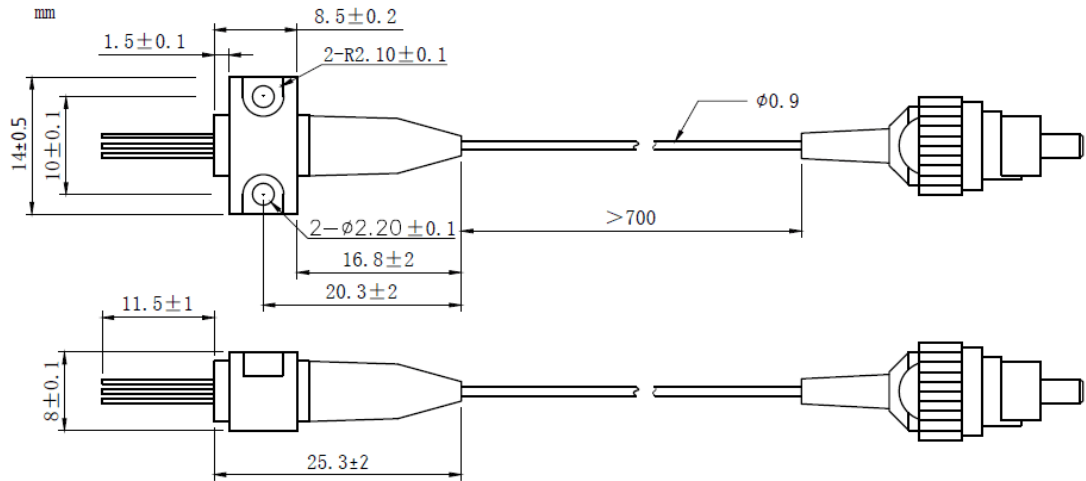
**RWLP-1450-005m-9-DFB-ISO**

PARAMETER	SYMBOL	VALUE	UNIT
LD Reverse Voltage	$V_r$	2.0	V
PD Reverse Voltage	$V_{r(PD)}$	15	V
Operating Temperature	$T_{op}$	-20 ~ +50	°C
Storage Temperature	$T_{stg}$	-40 ~ +100	°C
Lead soldering temperature (10 sec.)	$T_{is}$	260	°C
<b>Features:</b> <ul style="list-style-type: none"> <li>• 1450nm</li> <li>• DFB Laser Diode</li> <li>• Built-in Photodiodes</li> <li>• 9um SM Fiber</li> <li>• Built-in Isolator</li> <li>• Coaxial or B85 Package</li> </ul>			
<b>Applications:</b> <ul style="list-style-type: none"> <li>• Test Equipments</li> <li>• Optical Transmitter of Analog Signal</li> <li>• Optical Transmitter of Data Signal</li> </ul>			
<b>Specifications</b>		<b>RWLP-1450-005m-9-DFB-ISO</b>	
		Min	Type
Center Wavelength@25°C		±3nm	1450nm
Laser Type		DFB	
Output Power		----	5mW
Fiber Core		9um SM Fiber	
Threshold Current (Typ.) $I_{th}$		----	5mA
Operating Current		----	60mA
Operating Voltage		----	1.4V
Spectral Width (FWHM)		----	0.3nm
SMSR		----	35dB
Monitor Current		0.1mA	----
PD Capacitance		----	10pF
PD Dark Current		----	0.1uA
Optical Isolation		----	30dB
Package Style		Coaxial or B85	
Recommended Operation Temperature		25°C	
Connector		FC/SC/SMA905	

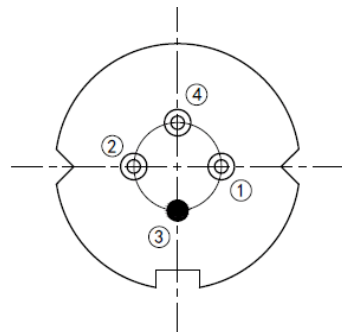
**Coaxial Package View: (Part Number: RWLP-1450-005m-9-DFB-ISO)**



**B85 Package View: (Part Number: RWLP-1450-005m-9-B-DFB-ISO)**



**Bottom View: (A-Type)**



PIN 1	PD(+)
PIN 2	LD(-)
PIN 3	LD(+), CASE
PIN 4	PD(-)