
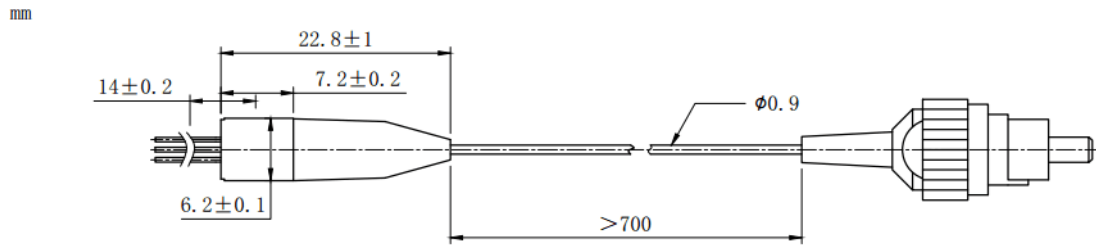


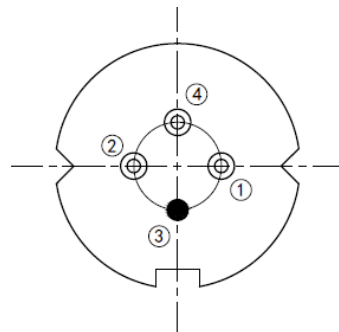
**1550nm 2mW~3mW DFB Coaxial Pigtailed Laser Diode with 9um SMF**  
**1550nm SM Fiber Coupled LD with Single Mode Fiber (SM Fiber)**  
**RWLP-1550-003m-9-DFB**

PARAMETER	SYMBOL	VALUE	UNIT
LD Reverse Voltage	$V_r$	2.0	V
PD Reverse Voltage	$V_{r(PD)}$	15	V
Operating Temperature	$T_{op}$	-40 ~ +85	°C
Storage Temperature	$T_{stg}$	-40 ~ +100	°C
Lead soldering temperature (10 sec.)	$T_{is}$	260	°C
<b>Features:</b> <ul style="list-style-type: none"> <li>● 1550nm</li> <li>● DFB Laser Diode</li> <li>● Built-in Photodiodes</li> <li>● 9um SM Fiber</li> <li>● Isolation Optional</li> <li>● Coaxial/Receptacle Package</li> </ul>			
<b>Applications:</b> <ul style="list-style-type: none"> <li>● Test Equipments</li> <li>● Optical Transmitter of Analog Signal</li> <li>● Optical Transmitter of Data Signal</li> </ul>			
<b>Specifications</b>	<b>RWLP-1550-003m-9-DFB</b>		
	Min	Type	Max
Center Wavelength@25°C	±3nm	1550nm	±10nm
Laser Type	DFB		
Output Power	2mW	3mW	----
Fiber Core	9um SM Fiber		
Threshold Current (Typ.) $I_{th}$	----	5mA	15mA
Operating Current	----	30mA	35mA
Operating Voltage	----	1.3V	1.6V
Spectral Width(FWHM)	----	----	2nm
SMSR	----	35dB	----
Monitor Current	0.1mA	----	----
PD Capacitance	----	10pF	20pF
PD Dark Current	----	----	0.1uA
Package Style	Coaxial (Receptacle Optional)		
Recommended Operation Temperature	25°C		
Connector	FC/SC/SMA905		

**Coaxial Package View:**



**Pin Bottom View (A-Type)**



PIN 1	PD (+)
PIN 2	LD (-)
PIN 3	LD (+), CASE
PIN 4	PD (-)

Electrically shorten LD module and store in non-extreme conditions.

Suggest using the constant current power supply.

