


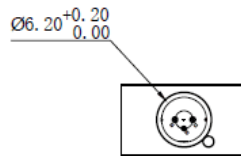
520nm Green 30mW MM Coaxial Fiber Coupled Laser Diode with MMF| Built-in Photodiode
515nm~520nm~530nm MM Pigtailed LD with 105um 50um 62.5um| With PD
RWLP-520-030m-M-PD

520nm Pigtailed Diode Laser		30mW/MMF	
PARAMETER	SYMBOL	VALUE	UNIT
Reverse Voltage	V_r	2.0	V
Operating Temperature	T_{op}	-10~+60	°C
Storage Temperature	T_{stg}	-40~+85	°C
Lead soldering temperature (10 sec.)	T_{is}	260	°C
Features: <ul style="list-style-type: none"> 🔦 520nm Green Diode Laser 🔦 With MM Fiber 🔦 Coaxial or B82 Package 🔦 Built-in Photodiode 			
Applications: <ul style="list-style-type: none"> 🔦 Medical Laser Treatment 🔦 Others 			
Specifications	RWLP-520-030m-M-PD		
	Min	Type	Max
Center Wavelength@25°C	520nm+/-10nm		
Spectral Width (FWHM)	----	2.0nm	----
Output Power	20mW	30mW	----
Fiber Type	Multimode Fiber		
Fiber Core	105um (50um, 62.5um Optional)		
PD Current	100uA		
Recommend Operating Temperature	25°C		
Fiber Connector	FC/SC/SMA905		
Fiber Length	>80cm		
Threshold Current (Typ.)	----	40mA	80mA
Operating Current (Typ.)	----	100mA	120mA
Operating Voltage	----	6.5V	8.0V
Package Style	Coaxial or B82		
Photodiode	Built-in		

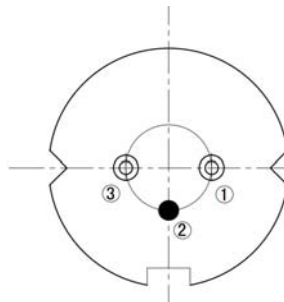
Coaxial Package View: (Part Number: RWLP-520-030m-M-PD)



B82 Package View: (Part Number: RWLP-520-030m-M-B-PD)



PIN Bottom View:



1	LD(-)
2	LD(+)&PD(-)
3	PD(+)

Electrically shorten LD module and store in non-extreme conditions.
Suggest using the constant current power supply.

