
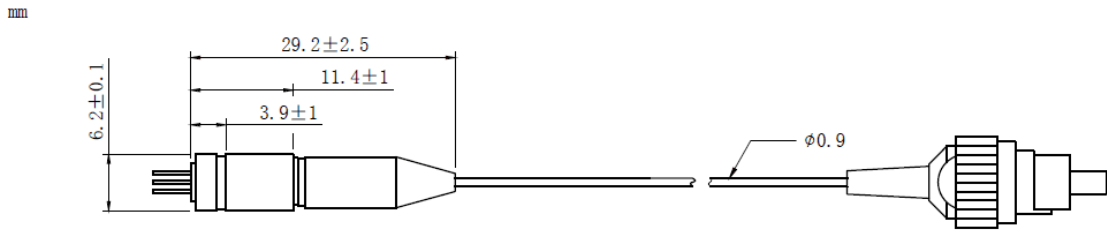


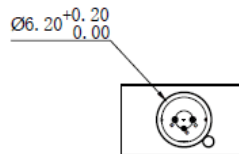
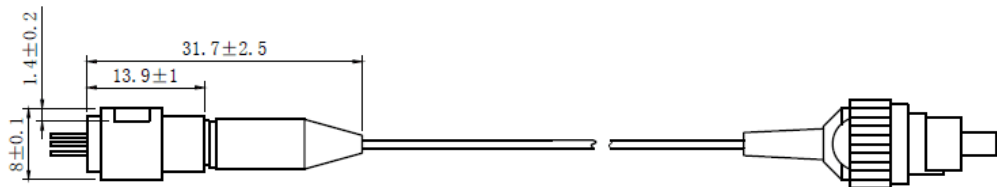
633nm~635nm 30mW~40mW SM Fiber Coupled Laser Diode with 4um SMF
633nm 30mW Coaxial Pigtailed LD with Single Mode Fiber (SM Fiber)
RWLP-633-030m-4

633nm Pigtailed Diode Laser		30mW/SM Fiber	
PARAMETER	SYMBOL	VALUE	UNIT
Reverse Voltage	V_r	2.0	V
Operating Temperature	T_{op}	-10~+20	°C
Storage Temperature	T_{stg}	-40~+85	°C
Lead soldering temperature (10 sec.)	T_{is}	260	°C
Features: <ul style="list-style-type: none"> ● 633nm ● SM Fiber ● Coaxial or B82 Package 			
Applications: <ul style="list-style-type: none"> ● Medical Laser Treatment ● Aiming Beam ● Others 			
Specifications	RWLP-633-030m-4		
	Min	Type	Max
Center Wavelength@18°C	633nm±5nm		
Recommended work Temperature	≤18°C		
Output Power	----	30mW	----
Fiber Type	Single Mode Fiber		
Fiber Core	4um		
Monitor Current	----	----	----
PD Reverse Voltage	----	----	----
Fiber Connector	FC/SC/SMA905		
Fiber Length	>80cm		
Threshold Current	----	55mA	90mA
Operating Current	----	180mA	200mA
Operating Voltage	----	2.7V	3.3V
Package Style	Coaxial or B82		

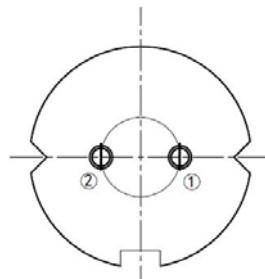
Coaxial Package View: (Part Number: RWLP-633-030m-4)



B82 Package View: (Part Number: RWLP-633-030m-4-B)



PIN Bottom View:



1	LD(+)
2	LD(-)

Electrically shorten LD module and store in non-extreme conditions.
Suggest using the constant current power supply.

