


**633nm~635nm 50mW PM Fiber Coupled Laser Diode with Coaxial Package | Red Laser Diode**  
**633nm 50mW Coaxial Pigtailed LD with Polarization Maintaining Fiber (SM Fiber)**  
**RWLP-633-050m-PM**

633nm Pigtailed Diode Laser		50mW/PM Fiber	
PARAMETER	SYMBOL	VALUE	UNIT
Reverse Voltage	$V_r$	2.0	V
Operating Temperature	$T_{op}$	-10~+20	°C
Storage Temperature	$T_{stg}$	-40~+85	°C
Lead soldering temperature (10 sec.)	$T_{is}$	260	°C
<b>Features:</b> <ul style="list-style-type: none"> <li>● 633nm</li> <li>● PM Fiber</li> <li>● High Reliability</li> <li>● High Polarization Extinction Ratio</li> </ul> <b>Applications:</b> <ul style="list-style-type: none"> <li>● Biological Instruments</li> <li>● Analytical Equipment</li> <li>● Others</li> </ul>			
<b>Specifications</b>	<b>RWLP-633-050m-PM</b>		
	Min	Type	Max
Center Wavelength@18°C		633nm±5nm	
Recommended work Temperature	≤18°C		
Output Power	----	50mW	----
Fiber Type	Polarization Maintaining Fiber		
Fiber Core	4um		
Polarization Extinction Ratio	13dB	15dB	----
Monitor Current	----	----	----
Fiber Connector	FC/APC		
Fiber Length	>80cm		
Threshold Current	----	60mA	95mA
Operating Current	----	200mA	220mA
Operating Voltage	----	2.7V	3.2V
Package Style	Coaxial or B82		
High Polarization Extinction Ratio (PER) Version Laser Module is also available, please contact us.			

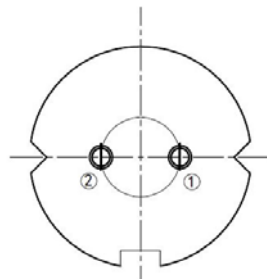
**Coaxial Package View: (Part Number: RWLP-633-050m-PM)**



**B82 Package View: (Part Number: RWLP-633-050m-PM-B)**



**PIN Bottom View:**



1	LD(+)
2	LD(-)

Electrically shorten LD module and store in non-extreme conditions.  
Suggest using the constant current power supply.

