
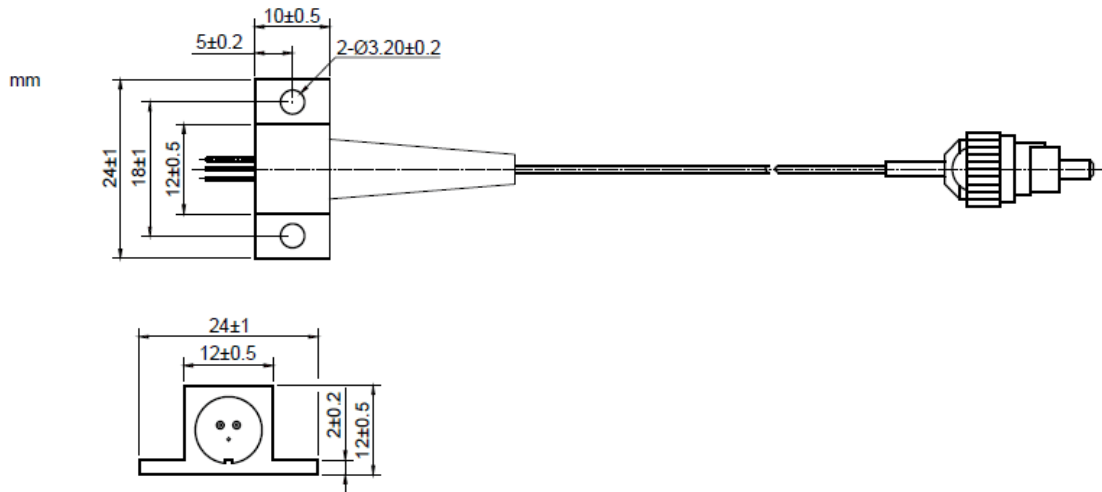


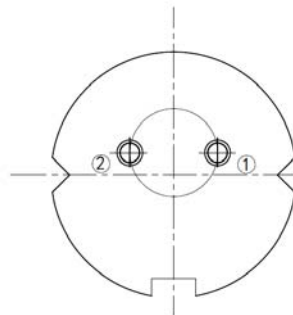
635nm 800mW High Power Fiber Coupled Laser Diode Module With 50um multi-mode Fiber
635nm~638nm 0.8W Pigtailed Diode Laser Module | High Power Red LD Module | Built-in TEC cooler Optional
RWLP-635-800m-50M

| PARAMETER | SYMBOL | VALUE | UNIT |
|---|-----------|--|-------------|
| MAX Reverse Voltage | V_r | 2.0 | V |
| Operating Temperature | T_{op} | 0 ~ +40 | °C |
| Storage Temperature | T_{stg} | -40 ~ +85 | °C |
| Lead soldering temperature (10 sec.) | T_{is} | 260 | °C |
| Features: <ul style="list-style-type: none"> • 638nm • 800mW Output Power • 50um Multi-mode Fiber • Compact Size • Built-in PD Optional | |  | |
| Applications: <ul style="list-style-type: none"> • Medical Laser Treatment • Laser Show • Others | | | |
| Specifications | | RWLP-635-800m-50M | |
| | | Min | Type |
| Center Wavelength@25°C | | 630nm | 638nm |
| Spectral Width (FWHM) | | ---- | 2.0nm |
| Temperature Coefficient of Wavelength | | ---- | 0.2nm / °C |
| Output Power | | 0.7W | 0.8W |
| Recommended Case Temperature | | 25°C | |
| Threshold Current (Typ.) | | ---- | 0.3A |
| Operating Current (Typ.) | | ---- | 1.5A |
| Operating Voltage | | ---- | 2.4V |
| Fiber Core Diameter | | 50um | |
| N.A. | | 0.22 | |
| Fiber Length | | >80cm | |
| Connector Type | | FC(SMA905 Optional) | |
| Package Style | | B13 Package | |

B13 Package View:



PIN Bottom View:



| | |
|---|-------|
| 1 | LD(+) |
| 2 | LD(-) |

Electrically shorten LD module and store in non-extreme conditions.
Suggest using the constant current power supply.

