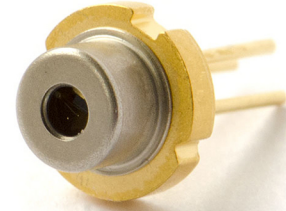


## TG 430-S

Visible and UV laser diodes in TO56 package



### Features:

Optical output power: 50mW (T<sub>case</sub>=20°C)

Peak wavelength: 430 +/- 2 nm @RT

Efficient radiation source for cw and pulsed operation

Single transverse mode semiconductor laser

### Absolute maximum ratings

Item	Symbol	Absolute Maximum Ratings	Unit
Allowable Reverse Current	$I_r$	1	[uA]
PD Reverse Voltage	$V_r$	5	[V]
Storage Temperature	$T_{storage}$	-10~85	[°C]
Operating Case Temperature	$T_C$	0~60*	[°C]

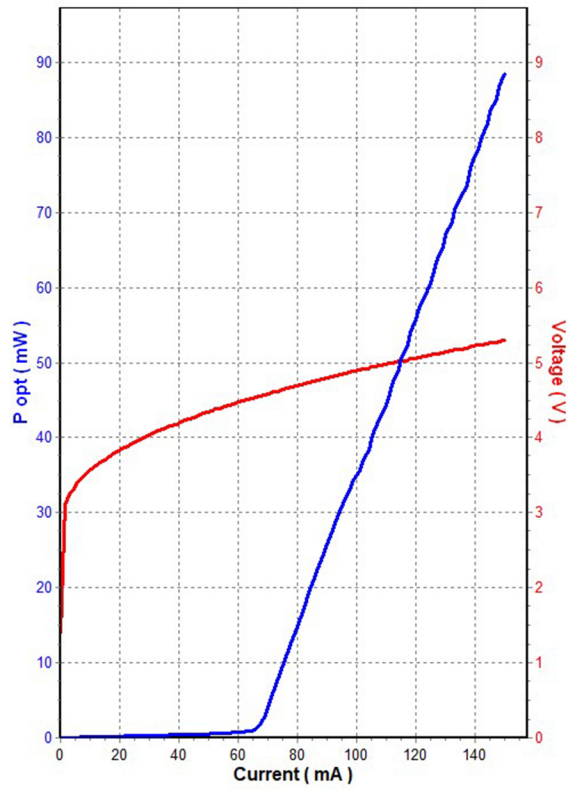
### Electric/Optical Characteristics

Item	Condition	Symbol	Value	Unit
Optical Output Power	CW	$P_O$	50	[mW]
Peak Wavelength	$P_O=50mW$	$\lambda_p$	430 +/-2	[nm]
Threshold Current	CW	$I_{th}$	43-122	[mA]
Operating Current	$P_O=50mW$	$I_{op}$	104 - 157	[mA]
Temperature wavelength shift	$P_O=50mW$	DI	0.05	[nm/deg]
Beam divergence - Fast axis			32	deg
Beam divergence - Slow axis			7	deg

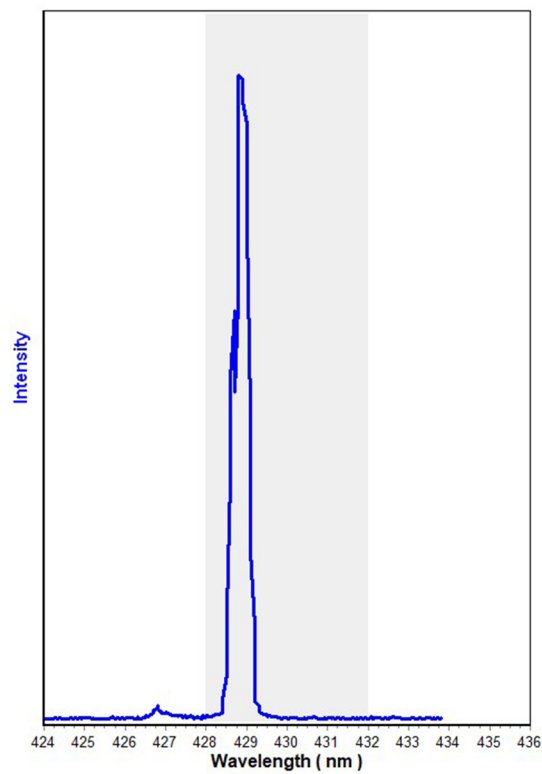
\*Please notice that the laser diode is designate to operate at room temperature (20 deg. C). The temperature increase leads to the shorter lifetime and lower output current.

# TG 430-S

## Optical output power

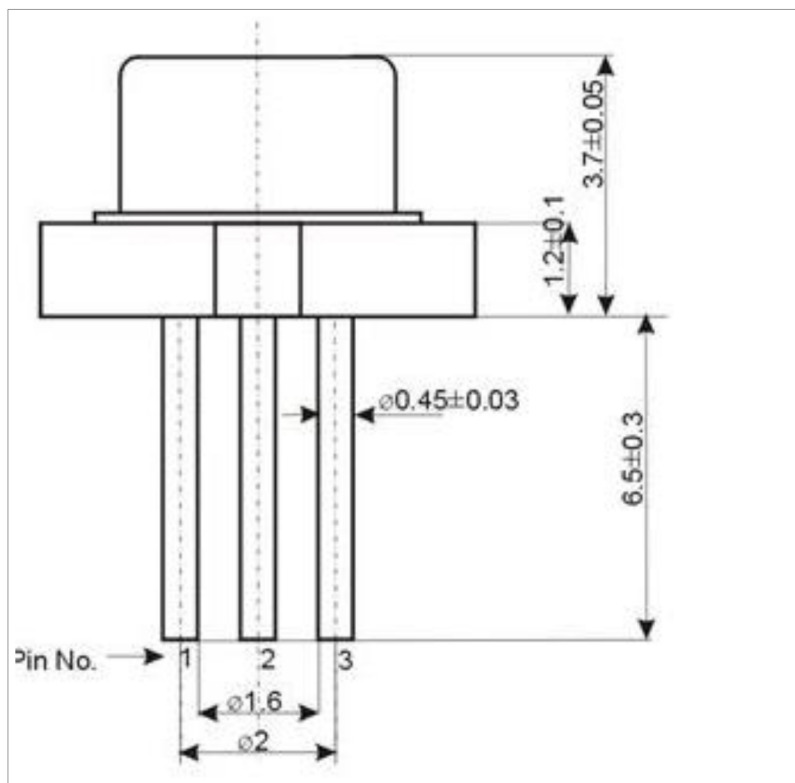


## Wavelength



# TG 430-S

## Physical dimensions



## Electrical connections

Laser is connected to isolated pins “1” and “3”. Pin “2” is connected with the case and not active.

