

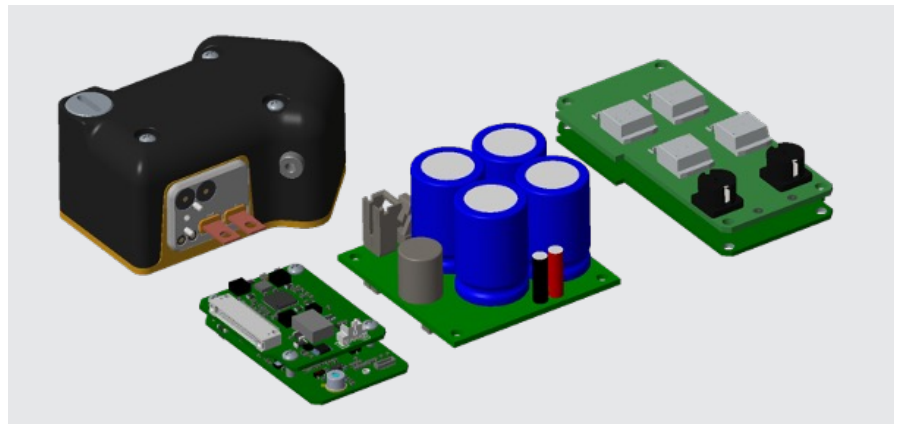
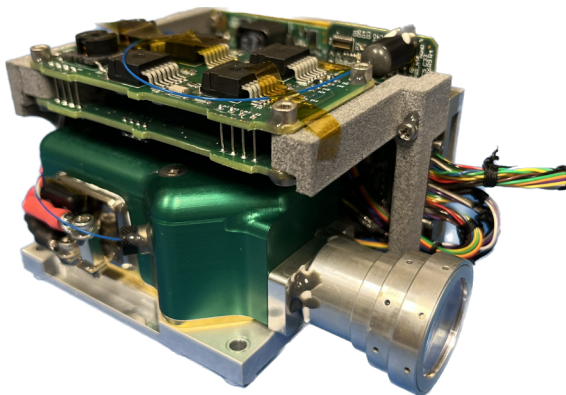


AIRTRAC®

LD Configuration



Areté's AIRTRAC-LD Laser Designator is a ruggedized laser with >50 mJ pulse energy. NATO STANAG 3733 capability in a very compact, lightweight and low power configuration. The athermal design provides high laser pulse energy over the full MIL-SPEC temperature range with low beam divergence and a full system weighing less than 320 grams. AIRTRAC-LD has established a new standard in size for lasers of this class.



Typical AIRTRAC-LD Configuration
Customizable customer configurations available.

Electronics and laser cavity are at the same scale.

Electronic Boards Used

| Component Name and Part Number | Qty Needed for System |
|---|-----------------------|
| HV Drive Electronics, P/N 100205-0001 | 1 |
| Diode Driver 4 Capacitor Version, P/N 112227-0001 | 1 |
| Diode Driver 2 Capacitor Version | Not Required** |
| AIRTRAC Control Stack, P/N 101825-0001 | 1 |

Telescope Options and Beam Divergence

| Available Telescopes* | Divergence |
|-----------------------|------------|
| 6X | < 250 urad |
| 5X | < 300 urad |
| 3X | < 500 urad |

*Custom telescopes or customer design can be considered
** Currently under test



Areté | 9301 Corbin Ave. Northridge, CA 91324 | arete.com
 POC: Kelly Hillman | (520)-429-4154 | khillman@arete.com
 POC: James Murray | (303) 532-8497 | jmurray@arete.com
 Business POC: Jay Rouse | (571) 255-4035 | jrouse@arete.com
 All Rights Reserved | Approved for Public Distribution | Copyright © 2023 Arété





AIRTRAC®

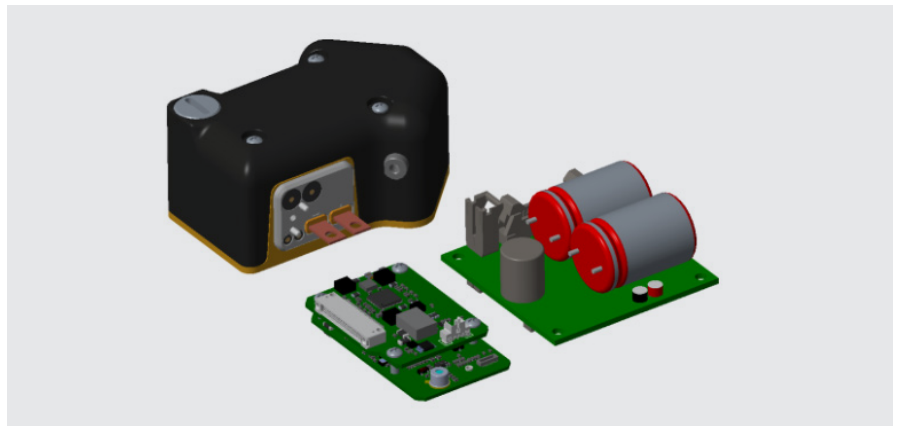
AIRTRAC-E (Available in Prototypes)



Areté's AIRTRAC 1064E is a ruggedized laser with >30mJ pulse energy. The 1064E provides key laser pulse energy and pulse width capabilities over the full MIL-SPEC temperature range. The condensed size and full system weighing less than 220 grams establishes the AIRTRAC 1064E as a new low weight standard for lasers of this class.



AIRTRAC-E Cavity



Electronics and laser cavity are at the same scale.

Electronic Components

| Component Name and Part Number | Qty Needed for System |
|--|-----------------------|
| Diode Driver 2 Capacitor Version | 1 |
| AIRTRAC Control Stack, P/N 101825-0001 | 1 |

Telescope Options and Beam Divergence

| Available Telescopes* | Divergence |
|-----------------------|------------|
| 6X | < 250 urad |
| 5X | < 300 urad |
| 3X | < 500 urad |

*Custom telescopes or customer design can be considered



Areté | 9301 Corbin Ave. Northridge, CA 91324 | arete.com
 POC: Kelly Hillman | (520)-429-4154 | khillman@arete.com
 POC: James Murray | (303) 532-8497 | jmurray@arete.com
 Business POC: Jay Rouse | (571) 255-4035 | jrouse@arete.com
 All Rights Reserved | Approved for Public Distribution | Copyright © 2023 Arété





AIRTRAC®

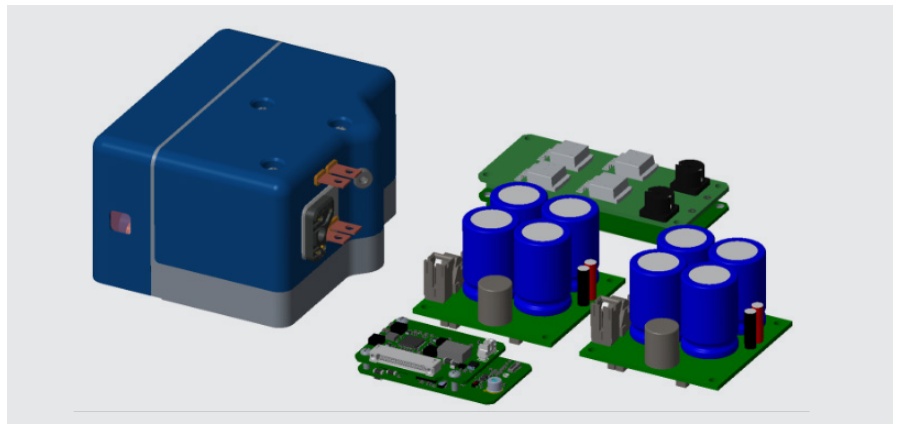
AIRTRAC-HP
(Available in Prototypes)



Introducing the cutting-edge Airtrac-HP: Elevate your power expectations while retaining the core advantages synonymous with the Airtrac-LD. Experience unparalleled performance potential as we merge high power capabilities with the hallmark features that define AIRTRAC technology.



AIRTRAC-HP Cavity



Electronics and laser cavity are at the same scale.

Electronic Components

| Component Name and Part Number | Qty Needed for System |
|---|-----------------------|
| HV Drive Electronics, P/N 100205-0001 | 1 |
| Diode Driver 4 Capacitor Version, P/N 112227-0001 | 2 |
| Diode Driver 2 Capacitor Version | Not Required** |
| AIRTRAC Control Stack, P/N 101825-0001 | 1 |

Telescope Options and Beam Divergence

| Available Telescopes* | Divergence |
|-----------------------|------------|
| 6X | < 250 urad |
| 5X | < 300 urad |
| 3X | < 500 urad |

*Custom telescopes or customer design can be considered
** Testing under way to determine the use of the 2 Capacitor diode driver



Areté | 9301 Corbin Ave. Northridge, CA 91324 | arete.com
POC: Kelly Hillman | (520)-429-4154 | khillman@arete.com
POC: James Murray | (303) 532-8497 | jmurray@arete.com
Business POC: Jay Rouse | (571) 255-4035 | jrouse@arete.com
All Rights Reserved | Approved for Public Distribution | Copyright © 2023 Arété



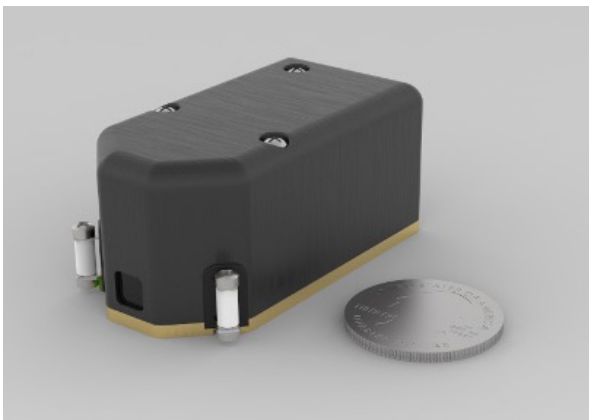


AIRTRAC®

AIRTRAC-Mini
(Product in Development)



Areté's AIRTRAC-Mini Series provides a ruggedized laser with models capable of > 25 mJ and > 15 mJ pulse energy. The Low-SWaP design provides key laser pulse energy and pulse width capabilities over the full MIL-SPEC temperature range. The condensed size and full system weight of less than 100 grams establishes the AIRTRAC-Mini Series as a new miniature designator standard for lasers of this class.



AIRTRAC-Mini Cavity

Production Electronics are under development for new reduced size PCA.

Testing is performed with current electronics.

| Electronic Components | |
|--------------------------------|-----------------------|
| Component Name and Part Number | Qty Needed for System |
| HV Drive Electronics | Under Development |
| Diode Driver | |
| AIRTRAC Control Board | |

| Beam Characteristics | |
|----------------------|------------|
| Divergence | < 750 urad |

*Custom lens design for improved divergence



Areté | 9301 Corbin Ave. Northridge, CA 91324 | arete.com
POC: Kelly Hillman | (520)-429-4154 | khillman@arete.com
POC: James Murray | (303) 532-8497 | jmurray@arete.com
Business POC: Jay Rouse | (571) 255-4035 | jrouse@arete.com
All Rights Reserved | Approved for Public Distribution | Copyright © 2023 Arété

