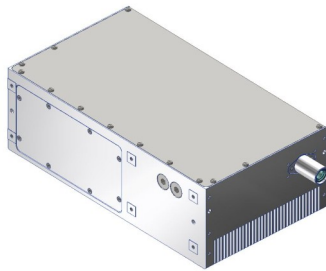


Aero 10mJ-355nm

ns DPSS Laser

Spec. #: 22B01



MAIN FEATURES

- _ up to 10 mJ @ 355 nm
- _ up to 100 Hz
- _ Compact Design
- _ Air Cooled / Water Cooled

TECHNICAL SPECIFICATIONS

Primary Output Wavelength	355	nm
Q-Switch Repetition Rate	1 to 100	Hz
Max Pulse Energy	up to 10	mJ
Pulse Energy Stability RMS @ 100 Hz	< 5	%
Pulse duration	< 15	ns
Beam diameter (1/e ²)	3.0 ± 0.5	mm
Beam divergence FA	< 8	mrاد
Polarization	Linear	
Cooling	Air Cooling (up to 50Hz) Water Cooling (up to 100Hz)	
Warm-up time	< 10	min
Control Connector	DB 15 pin	
Power supply Input Voltage requirements	Dual DC +15 V / +24 V	
Additional Output Wavelengths	residual 1064 and 532 collinear beams (optional: wavelength separators)	
Approx size of the unit (L, W, H)	24 x 14 x 8 (laser head) 34 x 14 x 8 (laser head with wavelength separator)	cm ³
Weight	< 5 kg (laser head) < 7 kg (laser head with wavelength separator)	kg



All information included in this document are subject to change without notice.

Updated data sheets can be provided on request.

For further details, please contact your local **Bright Solutions** sales representative or visit our website at www.brightsolutions.it

Bright Solutions Srl

Via Artigiani, 27

27010 Cura Carpignano - PV
Italy

Ph. +39 0382583094

e-mail: sales@brightsolutions.it