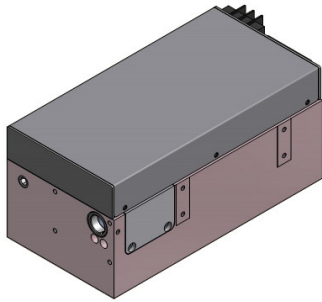


Iris 447nm

Spec. #: IRIS24201

Actively Q-Switched DPSS Laser



FEATURES

- _ 447nm output wavelength
- _ up to 2W average power
- _ Active Q-Switched up to 100 kHz
- _ All in one design
- _ Air-Cooled

Technical Specifications	Typical	
Output Wavelength	447	nm
Average Power	> 1 @ 100 kHz > 2 @ 50 kHz	W
Pulse Width	15 to 50	ns
Repetition Rate	50 to 100	kHz
Pulse to Pulse Energy Stability (RMS)	< 3%	
Polarization	Linear 100:1	
Beam diameter (1/e ²)	< 1	mm
Beam Quality (M ²)	< 1.5 @ 50 kHz	
Electrical Requirements	24 V DC IN – 300 W	
Cooling	Air Cooled	
Preliminary Mechanical Dimensions	235 x 105 x 95	mm ³
Weight	< 5	kg

Options Available:

- Low jitter option
- Water cooling
- External Beam expander

Applications:

- Material processing
- Special marking
- LIDAR



All information included in this document is subject to change without notice.

Update data sheets can be provided after formal request.

For complete details, please contact your local **Bright Solutions** sales representative or visit our website at www.brightsolutions.it

Bright Solutions Srl

Via Artigiani, 27
 27010 Cura Carpignano - PV
 Italy

Ph. +39 0382583094

e-mail: sales@brightsolutions.it